



Automatic tray sealer with vacuum and gas

TS-550

*Tray sealers with
vacuum for a perfect
and more lasting
conservation*



Technical information

- Stainless steel construction.
- Die set in anodised aluminium.
- Automatic or Semi-automatic tray sealer.
- 25m³/h vacuum pump.
- Gas flushing entrance, allows M.A.P. system (modified atmosphere packaging).
- Digital electronic control panel with 99 memory positions.
- Automatic sealing system.
- Automatic film feed.
- Compact and robust model.
- Fast heating of the selected temperature.
- Simple use machine.
- Allows working with different trays materials types, PP, PET, ALUMINUM...
- Equipped with wheels for easy displacement.
- Air compressor required for working.
- Machine works in three phase.
- Maximum sealing surface: 380x265mm.
- Film roll width: 430mm.
- Power: 1,500W.

Standard die set

Standard die set with profile cut:

- 1/8 GN (168x130mm) - 4 cavities.
- 1/4 GN (160x260mm) - 2 cavities.
- 1/2 GN (320x260mm) - 1 cavity.

We can manufacture any type of special die set according to the customer's trays.

Standard die set straight cut, not profile cut

- 1/8 GN (168x130mm) - 4 cavities.
- 1/4 GN (160x260mm) - 2 cavities.
- 1/2 GN (320x260mm) - 1 cavity.

We can manufacture any type of special die set according to the customer's trays.

Options

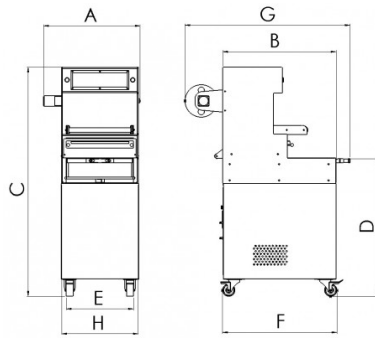
- 40m³/h Busch pump.
- 40m³/h oxygen Busch pump.
- Automatic tray holder drawer and automatic film collector (for molds with cutting profile).
- 6L.Silent air compressor.





Measures

A	612 mm.
B	730 mm.
C	1,490 mm.
D	890 mm.
E	395 mm.
F	1,115 mm.
G	495 mm.

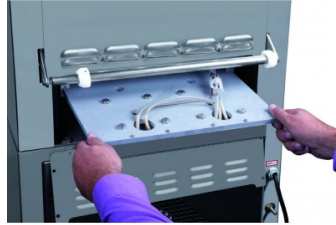




More Views



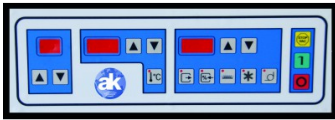
Tray details



Details of die set



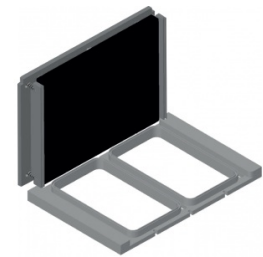
Die set details



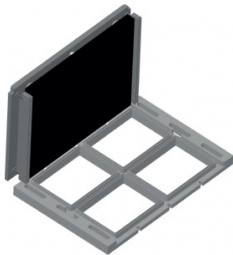
Panel



Die set with no profile cut



Die set with no profile cu



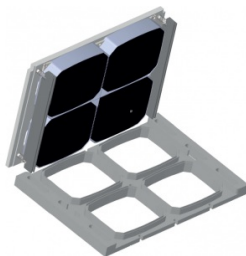
Die set with no profile cut



Die set with profile cut



Die set with profile cut



Die set with profile cut



Die set with profile cut